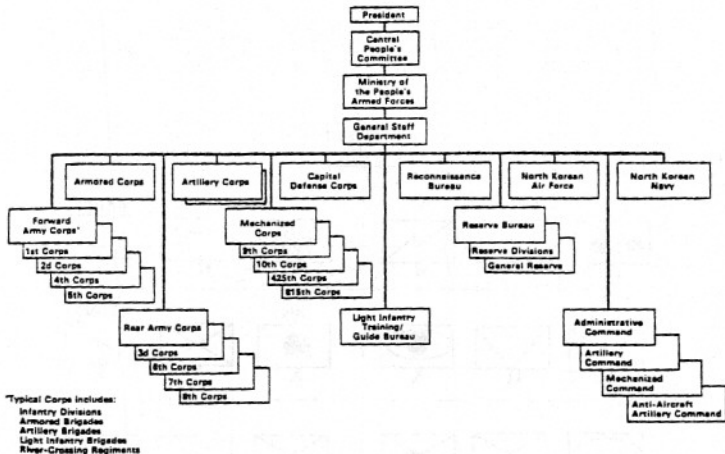
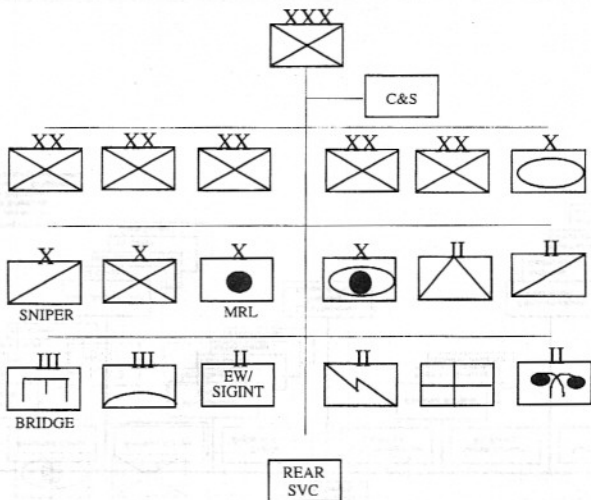


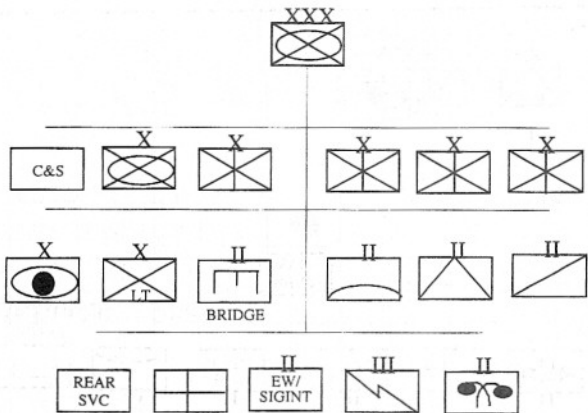
SECTION 5 ORGANIZATIONAL CHARTS



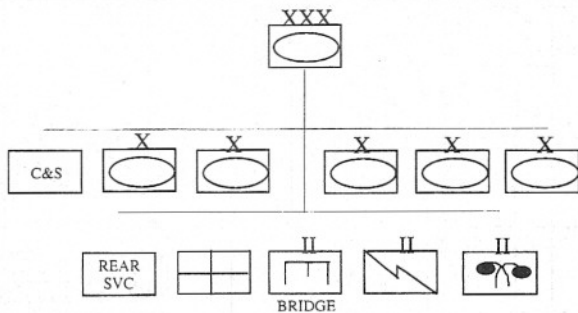
INFANTRY CORPS



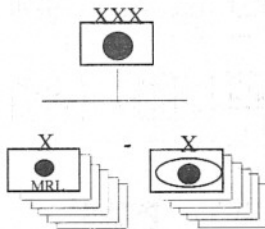
MECHANIZED INFANTRY CORPS

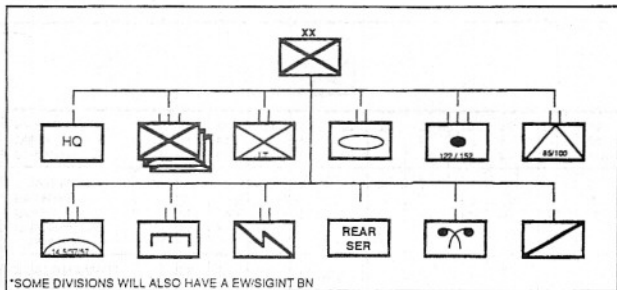


ARMOR CORPS

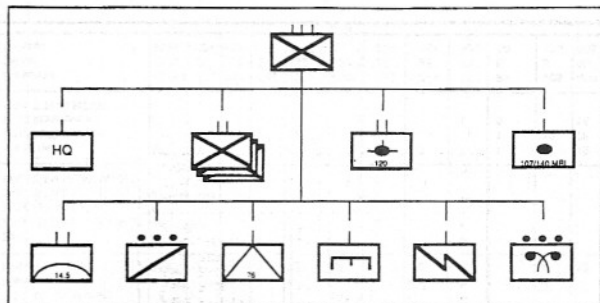


ARTILLERY CORPS



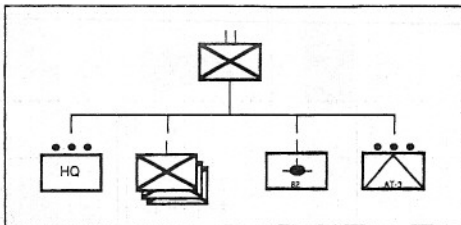


INF DIVISION	Total	Tk Bn	Art Reg	AT Bn	INF Reg	LINF Bn	AAA Bn	Eng Bn	Sig Bn	Recon Co	CML Co	HQ +RS
T-54/55(59)	31	31										
M1985/Type-62/63/PT-76	2	2										
D-20 152mm How	12		12									
D-74/M-38 122mm How	48		48									
T-63/RPU (107/140 MRL)	27				9							
D or M-44 (85/100 AT Gun)	12			12								
M-39 (76.2 AT Gun)	18				6							
AT-3 SAGGER	27				9							
B-10/11 (82/107 RG)	27				9							
RPG-7 (AT Lchr)	6656		8		192	18		10	4	4	4	36
M-43 (120mm Mortar)	54				18							
M-37 (82mm Mortar)	81				27							
T-31 (60mm Mortar)	18					18						
Flamethrower	4				4							
RPD/RP-46/SMG	859	2	34	8	257	18		6	8	4	4	12
SA-7b	42				12		6					
ZPU-2/4 (14.5 AAA HMG)	60				18		6					
M-39 (37 AAA Gun)	6						6					
S-80 (57 AAA Gun)	6						6					
FIRE CAN (FLAP WHEEL)	2						2					
V-415 (jeep)	57	3	8	1	8		1	3	5	1		12
2 1/2T UTLY (truck)	692	18	110	21	126	1	43	25	30	1	10	75
M-72 Motorcycle	29								8	5		16
T-34-T Tank RTVR	1	1										
Personnel	10359	226	930	195	2379	450	282	279	260	95	105	400
Officer	1333	22	118	23	182	450	23	25	21	5	5	95
Enlisted	9026	204	812	172	2197	0	259	254	239	90	100	305

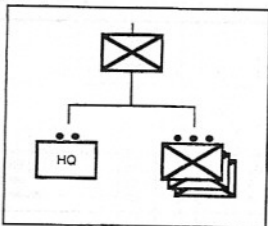


INF REGIMENT	Total	INF Bn	MTR Bn	AAA Bn	MRL Btry	AT Btry	Eng Co	Sig Co	Recon Plt	CML Plt	HHC
T-63/RPU (107/140 MRL)	9				9						
M-39 (76.2 AT Gun)	6					6					
AT-3 SAGGER	9	3									
B-10/11 (82/107 RG)	9	3									
RPG-7 (AT Lehr)	192	58	8				3	3			4
M-43 (120mm Mortar)	18		18								
M-37 (82mm Mortar)	27	9									
SA-7b	12	3		3							
ZPU-2/4 (14.5 AAA HMG)	18			18							
V-415 (jeep)	8	1	1	1							3
2 1/2T UTLY (truck)	126	8	31	33	9	7	5	5	5		7
Flamethrower	4						4				
RPD/RP-46/SMG	257	81	8				3	3			
Rifle AK	1896	360	156	259	70	73	61	54	30	25	88
Rifle M1891 30	18	6									
T-64/68 Pistol	182	29	26	23	5	5	5	5	1	1	24
Personnel	2379	476	206	282	75	78	76	65	31	26	112
Officer	182	29	26	23	5	5	5	5	1	1	24
Enlisted	2197	447	180	259	70	73	71	60	30	25	88

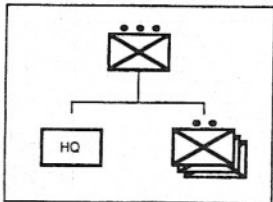
Infantry Battalion.



INF BATTALION	TL	INF Co	MTR Bty	AT Pt	HQ
AT-3 SAGGER	3			3	
B-10/11 (82/107 RG)	3			3	
RPG-7 (AT Lchr)	58	18		4	
M-37 (82mm Mortar)	9		9		
SA-7b	3				3
V-415 (jeep)	1				1
2 1/2T UTLY (truck)	8		3	3	2
RPD/RP-46/SMG	81	27			
Rifle AK	360	83	57	20	34
Rifle M1891 30	6	1			3
T-64/68 Pistol	29	5	5	1	8
Radio, R116/126	17	5			2
Radio, R106	9	1	1	1	4
Radio, R105	2				2
Radio, RDM	1				1
Teleph, TAI-43	24	5	5	1	3
Switchbd	6	1	1		2
Personnel	476	116	62	21	45
Officer	29	5	5	1	8
Enlisted	447	111	57	20	37

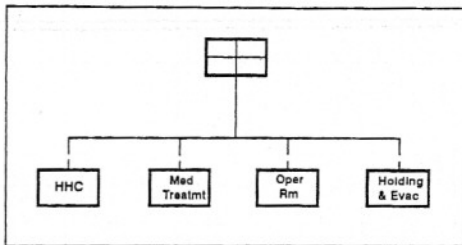


INF Company	TL	INF Plt	HQ
RPG-7 (AT Lchr)	18	6	
RPD/RP-46/SMG	27	9	
Rifle AK	83	27	2
Rifle M1891 30	1		1
T-64/68 Pistol	5	1	2
Radio, R116	5	1	2
Radio, R106	1		1
Teleph, TAI-43	5	1	2
Switchbd	1		1
Personnel	116	37	5
Officer	5	1	2
Enlisted	111	36	3

Infntry Platoon.

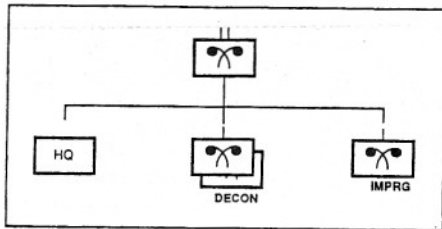
INF PLATOON	INF Plt	INF Sqd	HQ
RPG-7 (AT Lchr)	6	2	
RPD	9	3	
Rifle AK	27	9	
T-64/68 Pistol	1		1
Radio, R116	1		1
Teleph, TAI-43	1		1
Personnel	37	12	1
Officer	1		1
Enlisted	36	12	0

Field Hospital.



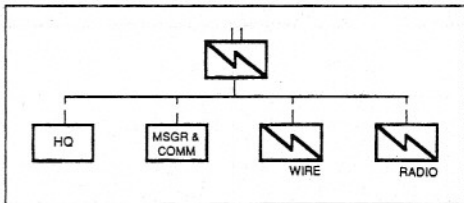
FIELD HOSP.	Total	HHC	MT Co	OP Rm Co	H&E Co
AK	370	84	81	142	63
T-64/68 Pistol	65	6	24	30	5
V-415 Jeep	4	4			
2 1/2T Trk	63	5	12	10	36
Total	445	90	105	172	68
Officers	65	6	24	30	5
Enlisted	370	84	81	142	63

Chemical Battalion



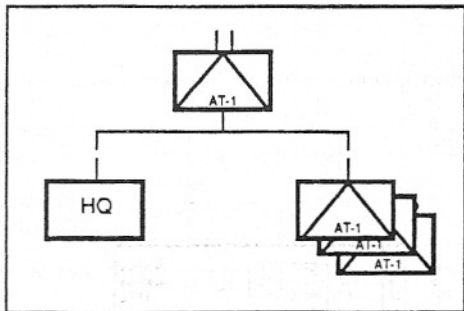
CHEMICAL BATTALION	Total	HQ	DECON Co	IMPRG Co
RPG-2/7 (40AT LCHR)	12	3	3	3
RPD/RPK	12	3	3	3
AK	276	42	84	66
T-64/68 Pistol	15	6	3	3
V-415 Jeep	1	1		
2 1/2T Trk	30	6	9	6
Total	315	54	93	75
Officers	15	6	3	3
Enlisted	300	48	90	72

Signal Battalion.



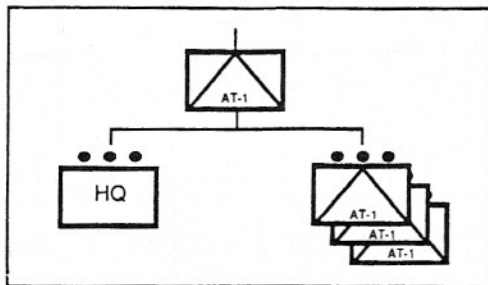
SIGNAL BATTALION	Total	HQ	MSGR+ COMM	WIRE Co	RADIO Co
RPG-2/7 (40AT LCHR)	12	2	2	4	4
RPD/RPK	14	4	2	4	4
AK	234	47	48	72	67
T-64/68 Pistol	39	21	7	6	5
V-415 Jeep	5	2	1	1	1
2 1/2T Trk	37	6	4	10	17
M-72 Motorcycle	20		20		
Radio ?	9	3			6
Switchboard	14	1	4	9	
Telegraph	5		5		
Total	299	74	59	86	80
Officers	39	21	7	6	5
Enlisted	260	53	52	80	75

Corps Antitank Guided Missile Battalion



ATGM BATTALION	Total	ATGM Co	HQ
UAZ-69 ATGM AT-1	54	18	
AK	254	72	38
T-64/68 Pistol	35	9	8
V-415 Jeep	4	1	1
2 1/2T Trk	21	5	6
Total	291	81	48
Officer	35	9	8
Enlisted	256	72	40

Corps Antitank Guided Missile Company



	Total	ATGM Plt	HQ
UAZ-69 ATGM AT-1	18	6	
AK	72	17	21
T-64/68 Pistol	9	2	3
V-415 Jeep	1		1
2 1/2T Trk	5	1	2
Total	81	19	24
Officer	9	2	3
Enlisted	72	17	21